

## Faucet Aerator - 2.2 gpm max Pressure Compensating Regular Size



flow, stop and go®

### Features and Benefits

- Watercolours™ design: Color coding to identify flow rate and stream pattern.
- Patented construction provides a splash-free stream, well-aerated and soft to the touch.
- Pressure compensating for constant flow from 20 to 80 psi.
- Integrated anti-liming honeycomb replaces conventional wire mesh screens prone to lime build up.
- Anti-clogging dome screen filters sediment and particles.
- Compatible with regular and vandal proof M22 & M24 metric housings.
- Available housing finishes: chrome, polished brass, brushed nickel, and oil rubbed bronze.
- Laser marked housings with statutory marks.

### Certifications

ANSI/ NSF® -61-372  
ASME A112.18.1M and CSA B125 (11 220 pending)

### Thread & Part Number

Part #	Designation	Thread Size
TSA-220INST-P	Insert only	
TSA-220MST-P	Regular male	15/16"-27
TSA-220FST-P	Regular female	55/64"-27
TSA-220DTST-P	Regular dual thread	15/16"-27 x 55/64"-27
TSA-220MSTVP-P	Vandal proof regular male	15/16"-27
TSA-220FSTVP-P	Vandal proof regular female	55/64"-27
TSA-220DTSTVP-P	Vandal proof regular dual thread	15/16"-27 x 55/64"-27

Other product combinations available.

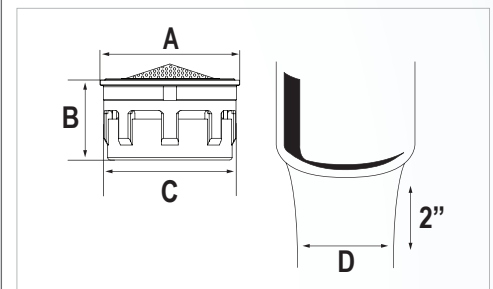
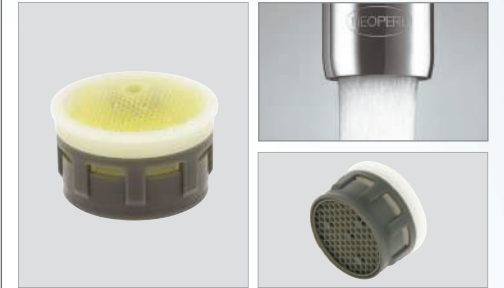
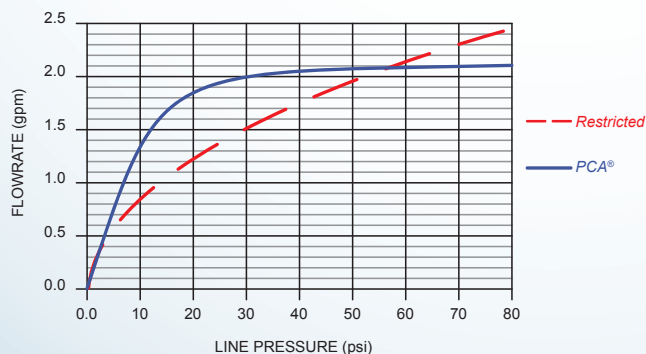
### Packaging:

Inserts	1 pc (bag), 6 pcs (bag), 50 pcs (bag)
Reg. male/female/dual thread	1 pc (bag), 6 pcs (tube), 50 pcs (tray)
Reg. vandal proof male/female/dual thread	1 pc (bag), 6 pcs (tube), 40 pcs (tray)

### Color Code

Dome	Flow Regulator	Basket
Clear	Yellow	Dark Gray

### Flow Rate Curve



### Dimensions

No	mm	In
A	20.88	.821
B	12.00	.472
C	19.97	.786
D	≈ 13	≈ 1/2

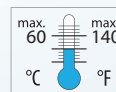
### Housings



### Technical Data

Materials:	Body	Acetal
	O-ring	EPDM
	Washer	EPDM

### Continuous



### Short-term (5 minutes max.) Per ASME A112.18.1 testing requirements.

