

PCA® Perlator®

Laminar Stream - 2.2 gpm max Pressure Compensating Regular Size



flow, stop and go®

Features and Benefits

- ▶ Watercolours® design: Color coding to identify flow rate and stream pattern.
- ▶ Patented construction provides a splash-free, crystal clear (non-aerated) stream.
- ▶ Pressure compensating for constant flow from 20 to 80 psi.
- ▶ Recommended for use in healthcare facilities to prevent mixing air and water.
- ▶ Integrated anti-liming honeycomb replaces conventional wire mesh screens prone to lime build up.
- ▶ Anti-clogging dome screen filters sediment and particles.
- ▶ Compatible with regular and vandal proof M22 & M24 metric housings.
- ▶ Available housing finishes: chrome, polished brass, brushed nickel and oil rubbed bronze.
- ▶ Laser marked housings with statutory marks.

Certifications

ANSI/ NSF® -61-372 (11 410 pending)
ASME A112.18.1M and CSA B125 (11 410 pending)

Thread & Part Number

Part #	Designation	Thread Size
TSL-220INST-P	Insert only	
TSL-220MST-P	Regular male	15/16"-27
TSL-220FST-P	Regular female	55/64"-27
TSL-220DTST-P	Regular dual thread	15/16"-27 x 55/64"-27
TSL-220MSTVP-P	Vandal proof regular male	15/16"-27
TSL-220FSTVP-P	Vandal proof regular female	55/64"-27
TSL-220DTSTVP-P	Vandal proof regular dual thread	15/16"-27 x 55/64"-27

Other product combinations available.

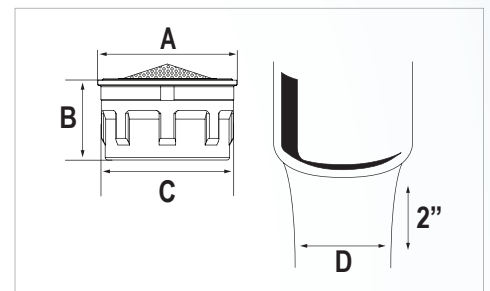
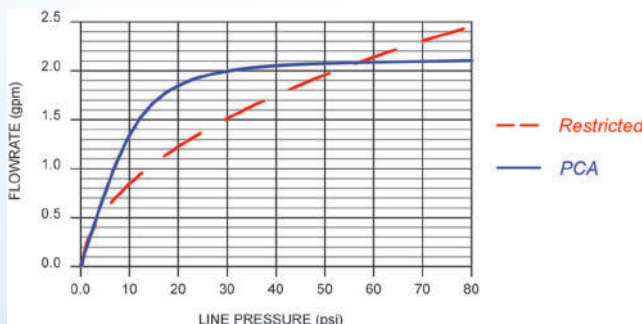
Packaging:

Inserts 1 pc (bag), 6 pcs (bag), 50 pcs (bag)
Reg. male/female/dual thread 1 pc (bag), 6 pcs (tube), 50 pcs (tray)
Reg. vandal proof male/female/dual thread 1 pc (bag), 6 pcs (tube), 40 pcs (tray)

Color Code

Dome	Flow Regulator	Basket
Clear	Yellow	Light Gray

Flow Rate Curve



Dimensions

No	mm	In
A	20.88	.822
B	12.00	.472
C	19.97	.786
D	≈ 13	≈ 1/2

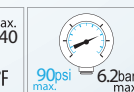
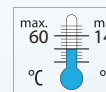
Housings



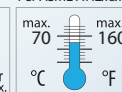
Technical Data

Materials: Body Acetal
O-ring EPDM
Washer EPDM

Continuous



Short-term (5 minutes max.) Per ASME A112.181 testing requirements.



90psi max. 6.2bar max.

125psi max. 8.5bar max.