

## Rose Spray

### For Hospital Scrub Sink Spouts Pressure Compensating



flow, stop and go®

#### Features and Benefits

- ▶ Solid brass construction.
- ▶ Pressure compensating for water and energy conservation.
- ▶ Recommended for use in healthcare facilities to prevent mixing air and water.
- ▶ For spray coverage with two concentric sprays.
- ▶ Consistent non-splashing, non-aerated spray pattern.
- ▶ Compatible with all spouts with 3/8" threads.

#### Certifications

ANSI/ NSF ® -61-372  
ASME A112.18.1M and CSA B125 (pending)

#### Dimensions

No	mm	Tolerance	In	Tolerance
A			3/8"	18 NPT
B	9.53	+ 0.25 / - 0.25	0.375	+ 0.10 / - 0.10
C	29.85		1.175	
D	34.90		1.37	

#### Materials

No	Name	Material
1	Body	Chrome plated brass
2	Spray face	Acetal
3	Flow regulator	Acetal

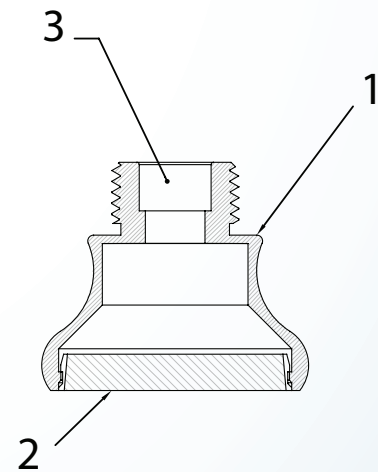
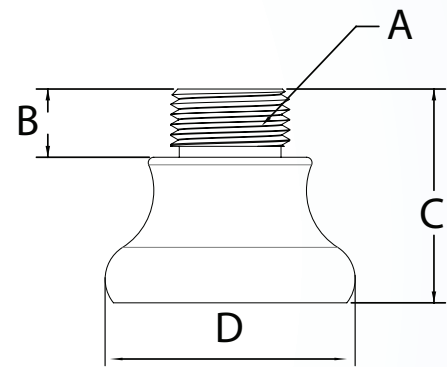
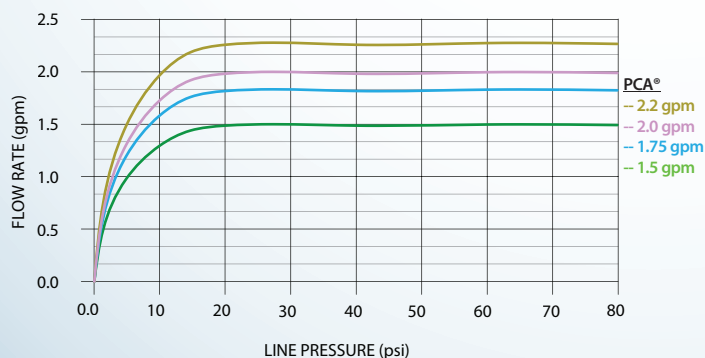
#### Options Available

Part #	Description
TSS-150ROSE	1.5 gpm - Green flow regulator
TSS-175ROSE	1.75 gpm - Light blue flow regulator
TSS-200ROSE	2.0 gpm - Lilac flow regulator
TSS-220ROSE	2.2 gpm - Yellow flow regulator

#### Packaging:

Rose Spray 1 pc (bag)

#### Flow Rate Curve



#### Technical Data

Continuous		Short-term (5 minutes max.) Per ASME A112.18.1 testing requirements.	
max. 60 °C	max. 140 °F	max. 70 °C	max. 160 °F
90psi max.	6.2bar max.	125psi max.	8.5bar max.