

Faucet Aerator - 2.2 gpm max Pressure Compensating Tom Thumb® Size



flow, stop and go®

Features and Benefits

- Watercolours™ design: Color coding to identify flow rate and stream pattern.
- Patented construction provides a splash-free stream, well-aerated and soft to the touch.
- Pressure compensating for constant flow from 20 to 80 psi.
- Integrated anti-liming honeycomb replaces conventional wire mesh screens prone to lime buildup.
- Anti-clogging dome screen filters sediment and particles.
- Available housing finishes: chrome.
- Roll marked with statutory marks.

Certifications

ANSI/ NSF® -61-372 (11 296, 11 297 pending)
ASME A112.18.1M and CSA B125 (pending)

Thread & Part Number

Part #	Designation	Thread Size
TSA-220INTT-P	Insert only	
TSA-220MTT-P	Tom Thumb® male	M18x1
TSA-220FTT-P	Tom Thumb® female	M16x1

Other product combinations available.

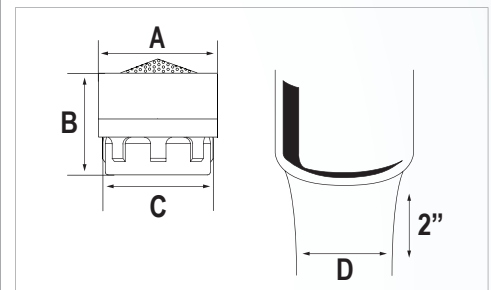
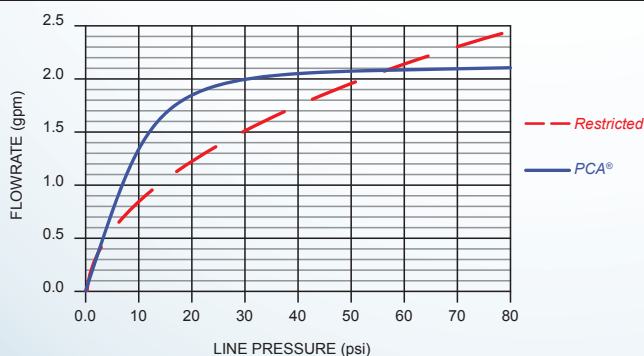
Packaging:

Inserts 1 pc (bag), 6 pcs (bag), 50 pcs (bag)
Tom Thumb® male/female 1 pc (bag), 50 pcs (tray)

Color Code

Dome	Flow Regulator	Basket
Clear	Yellow	Dark Gray

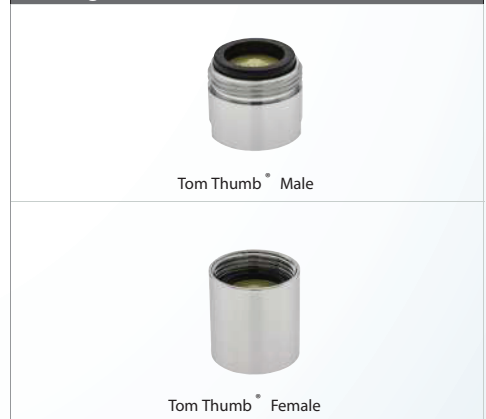
Flow Rate Curve



Dimensions

No	mm	In
A	15.00	.591
B	12.95	.510
C	14.05	.553
D	≈ 9	≈ 3/8

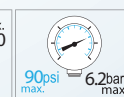
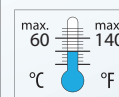
Housings



Technical Data

Materials: Body Acetal
O-ring EPDM
Washer NBR

Continuous



Short-term (5 minutes max.) Per ASME A112.18.1 testing requirements.

