

## Tub Filler

### Laminar Stream - Full Flow Neostrahl® Junior Size



flow, stop and go®

#### Features and Benefits

- ▶ Screenless construction.
- ▶ Provides a splash-free, crystal clear (non-aerated) stream.
- ▶ Available housing finishes: unplated, chrome, and PVD.
- ▶ Marking: Roll mark (custom and/or statutory marks) or laser for vandal proof housings only (custom logo and/or statutory mark).

#### Certifications

#### Options Available

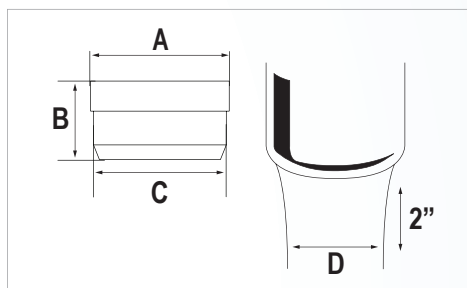
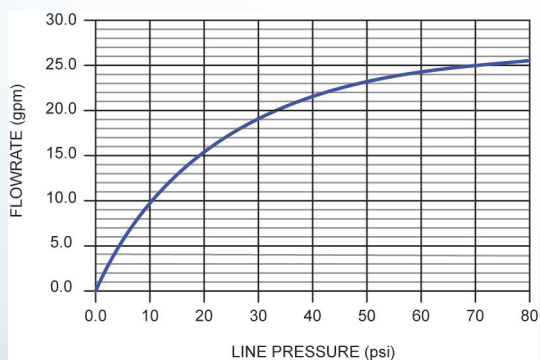
Part #	Designation
TFL-INJU-N	Insert only
TFL-MJU-N	Junior Male 13/16" -27
TFL-FJU-N	Junior Female 3/4" -27

- WSA applies to insert only

#### Color Code

Dome: N/A	Diffuser: N/A	Basket: N/A
-----------	---------------	-------------

#### Flow Rate Curve



#### Dimensions

No	mm	In
A	18.21	.717
B	10.40	.409
C	17.40	.685
D	≈ 11	≈ 7/16

#### Housings



Junior Male

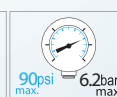
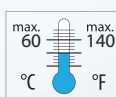


Junior Female

#### Technical Data

Materials:	Body	Acetal
	Washer	EPDM
Wetted surface area:	2084 mm <sup>2</sup>	

#### Continuous



#### Short-term (5 minutes max.) Per ASME A112.1 testing requirements.

