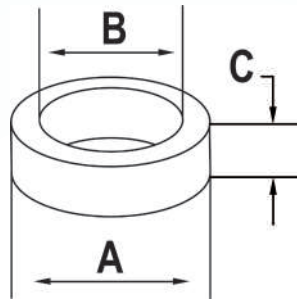










Washers



flow, stop and go®



Part #	Designation	Material	A	B	C	Durometer	NSF Approved
 TS-WASHER-MST	Regular Male Fits: Any Regular size male, vandal proof male, and Euro male housings	EPDM	.839	.590	.095	70	S
 TS-WASHER-FST	Regular Female * Fits: Any Regular size female, vandal proof female, and dual thread housing	EPDM	.825	.590	.072	70	S
 TS-WASHER-DTST	Dual Thread * Fits: Any Regular size and vandal proof dual thread housings	EPDM	.828	.610	.180	70	S
 TS-WASHER-CST	Regular Chicago Adapter Fits: Regular size chicago adapter	EPDM	.772	.500	.062	70	S
 TS-WASHER-MJU	Junior Male Fits: Any junior size male, vandal proof male, and male with tightening groove housings	EPDM	.728	.590	.125	70	S
 TS-WASHER-FJU	Junior Female Fits: Any junior size female, and vandal proof female housings	EPDM	.726	.590	.144	70	S
 TS-WASHER-MTT	Tom Thumb * Male Fits: Any male M18 housing	NBR	.591	.433	.110	70	S
 TS-WASHER-FTT	Tom Thumb * Female Fits: Any female M16 housing	NBR	.591	.433	.059	70	S

