

## PCW02

### Shower Regulator Flow Regulator - Pressure Compensating

NEOPERL®

flow, stop and go®

#### Features and Benefits

- Operates as a flexible orifice to provide reliable flow regulation from 20 to 80 psi.
- Recommended for use with shower handles, bibs and pillar taps.
- Fits in various tube diameters (11 to 16 mm).
- Flexible silicone adapter for secure positioning.
- Requires gentle hand tightening only.

#### Part Numbers

Part #	Color	gpm	L/min
FC-PCW02-150	Green	1.5	5.7
FC-PCW02-175	Light blue	1.75	6.6
FC-PCW02-200	Lilac	2.0	7.6
FC-PCW02-220	Yellow	2.2	8.3
FC-PCW02-220	Black	2.5	9.4

#### Packaging:

PCW-02 shower regulator 1 pc (bag), 6 pcs (bag), 50 pcs (bag)



#### Certification

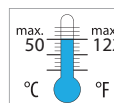
#### Materials

Name	Material
Washer	Silicone
Core	Acetal
O-ring	EPDM

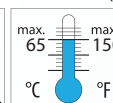
#### Technical Data

Medium: Clear water only

#### Continuous

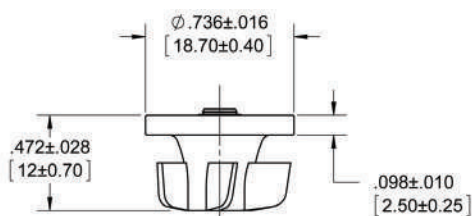


#### Short-term (5 minutes max.)



#### Dimensions

#### Flow Regulator Dimensions



#### Mounting Dimensions

