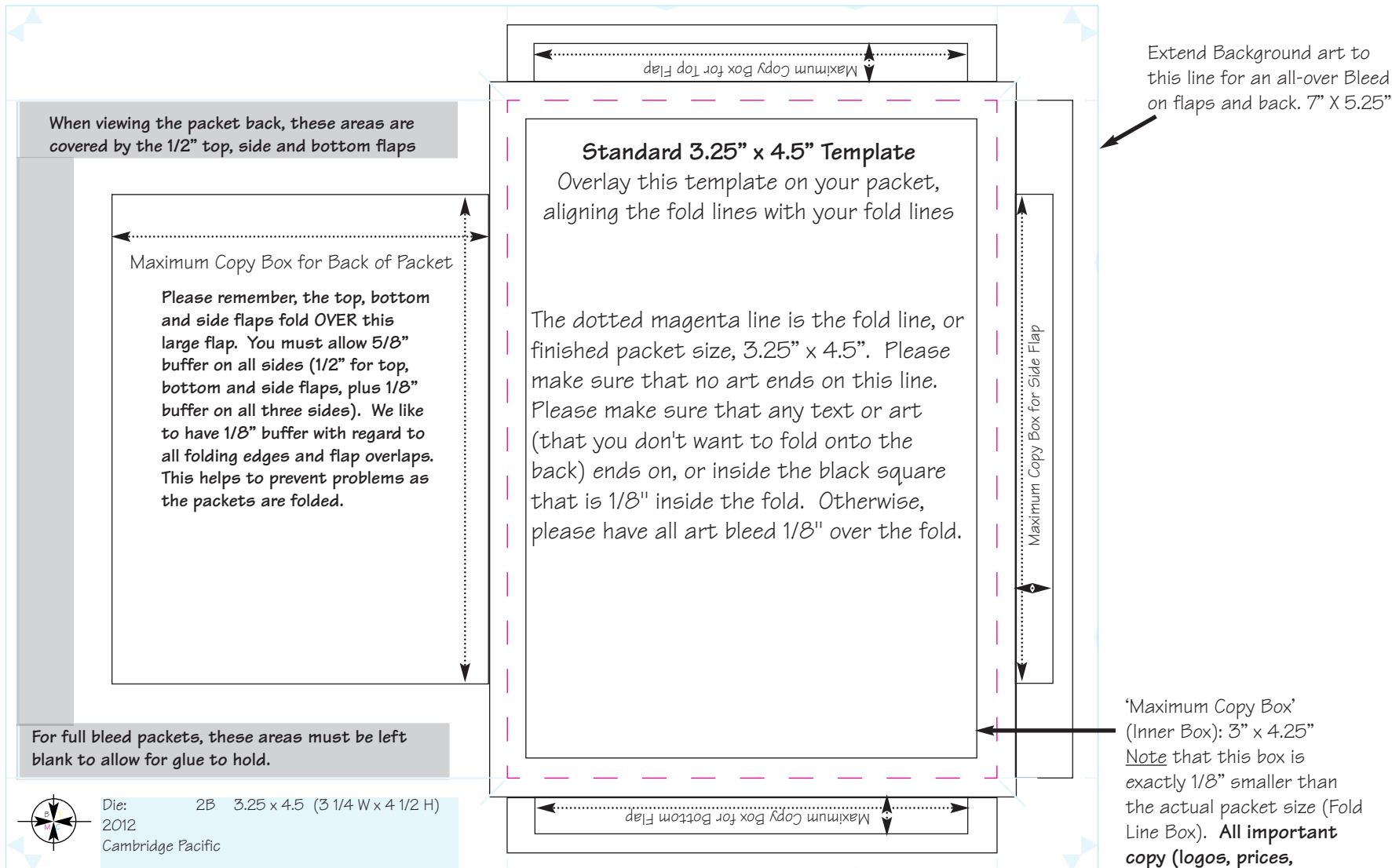


Standard 3.25" x 4.5" Template

The best way to think of a packet is a series of connected boxes. Ignore the "curves" and slants when setting up a packet and concentrate on fitting the specifications within the boxes.

**PLEASE DO NOT ALTER THIS TEMPLATE IN ANY WAY!
THANK YOU!**



When viewing the packet back, these areas are covered by the 1/2" top, side and bottom flaps

Maximum Copy Box for Back of Packet

Please remember, the top, bottom and side flaps fold OVER this large flap. You must allow 5/8" buffer on all sides (1/2" for top, bottom and side flaps, plus 1/8" buffer on all three sides). We like to have 1/8" buffer with regard to all folding edges and flap overlaps. This helps to prevent problems as the packets are folded.

For full bleed packets, these areas must be left blank to allow for glue to hold.



Die: 2B 3.25 x 4.5 (3 1/4 W x 4 1/2 H)
2012
Cambridge Pacific

Maximum Copy Box for Top Flap

Standard 3.25" x 4.5" Template
Overlay this template on your packet, aligning the fold lines with your fold lines

The dotted magenta line is the fold line, or finished packet size, 3.25" x 4.5". Please make sure that no art ends on this line. Please make sure that any text or art (that you don't want to fold onto the back) ends on, or inside the black square that is 1/8" inside the fold. Otherwise, please have all art bleed 1/8" over the fold.

Maximum Copy Box for Side Flap

Maximum Copy Box for Bottom Flap

Extend Background art to this line for an all-over Bleed on flaps and back. 7" X 5.25"

'Maximum Copy Box' (Inner Box): 3" x 4.25"
Note that this box is exactly 1/8" smaller than the actual packet size (Fold Line Box). **All important copy (logos, prices, weights, text...) must fall 1/8" inside the fold lines on all 4 sides.**